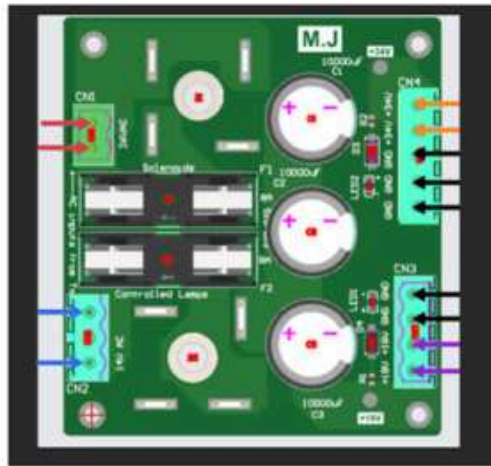


Pinball Bridge Board install instructions v1.0 MJ

These are details instructions on how to install the fused protected Pinball Bridge Board (MJ) PCB utilizing a 1986 Williams High Speed System 11a pinball as an example. Power off machine and unplug before installing.



Current configuration to reference:

Bridge Rectifiers located in the back box



Power supply

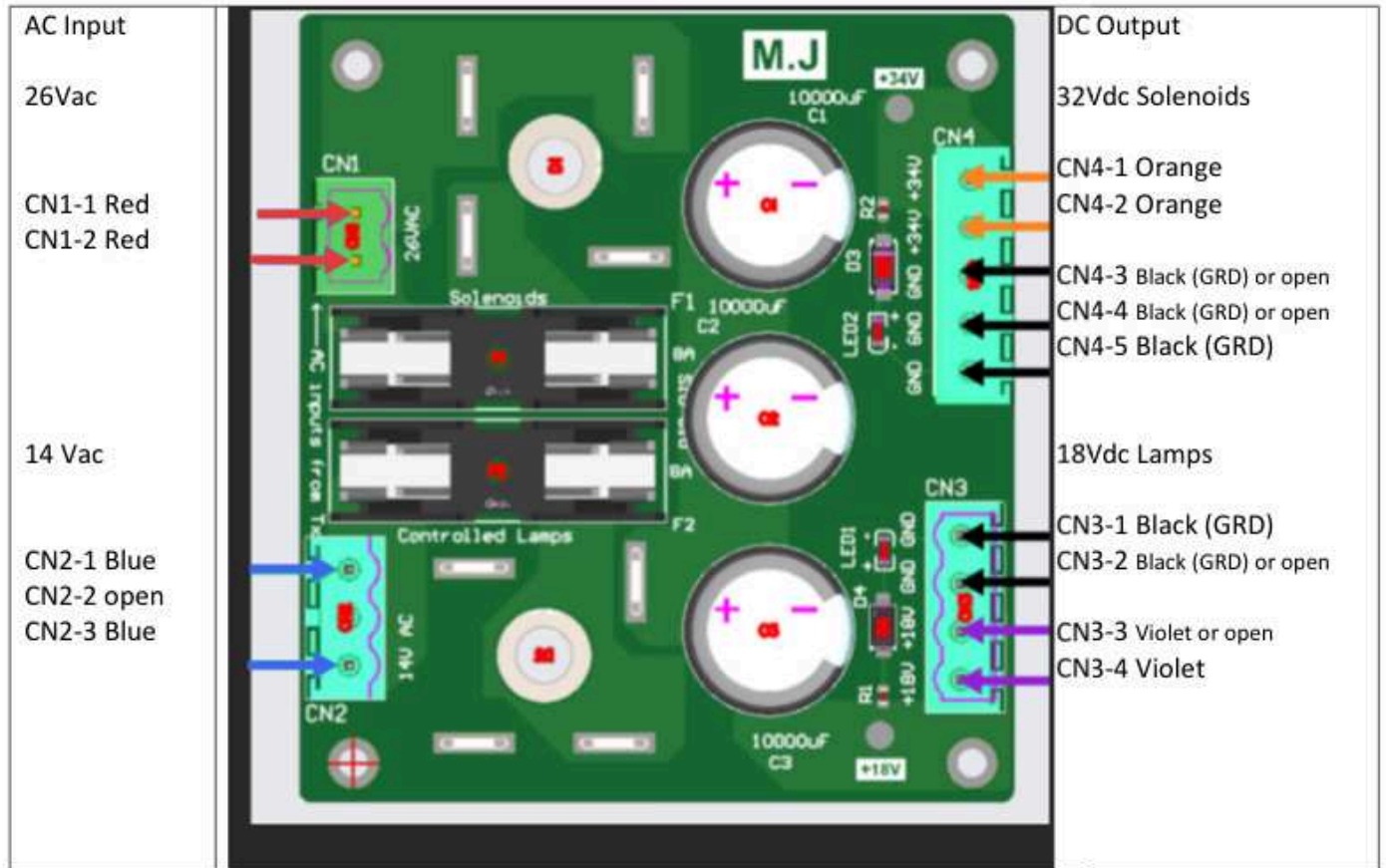


Capacitor



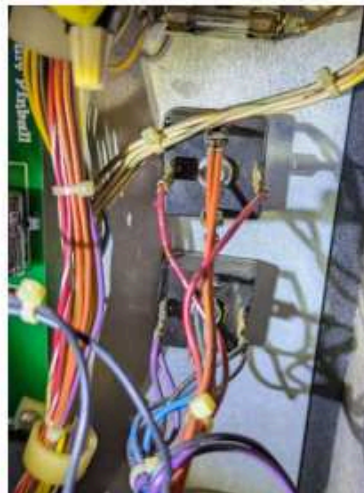
Installation (POWER OFF and UNPLUG machine)

1. Wire mapping diagram.



Data East/Sega AC inputs will utilize (26Vac)WHITE-RED instead of red and (14Vac)WHITE-BLUE instead of blue. F14 Tomcat and Fire! (14Vac)Blue input wires are GREY. Check your corresponding game schematics to confirm.

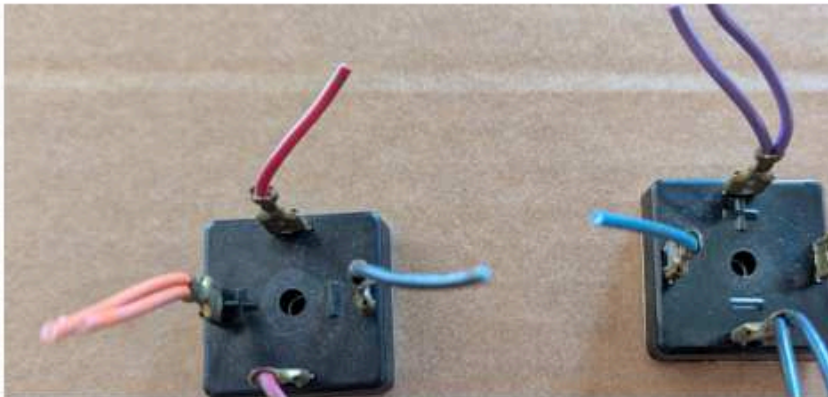
2. Remove screws from bridges. 1/4" screws.



3. Cut RED and BLUE wires and strip the ends.
4. Mount new Bridge PCB with screws and washers from old Bridge rectifiers.
5. Connect RED wires to CN1 and BLUE wires to CN2. Reference wire mapping diagram
6. Plug in pinball machine. Turn on. RED LEDs should illuminate. Test output DC voltage with a multimeter. Test pads are available on PCB for 18VDC and 32VDC, or utilize DC output plug.

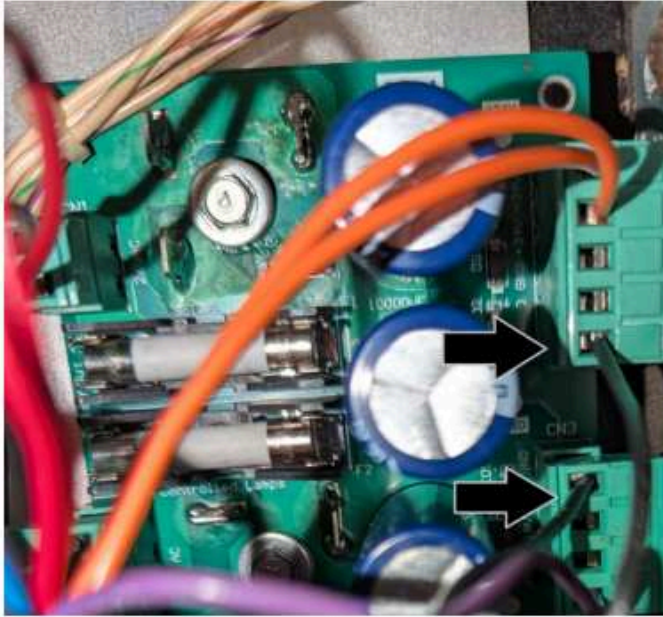


7. Cut VIOLET, BLACK, and ORANGE wires from Bridge Rectifiers. Make sure that the original 25,000 uf capacitor is no longer connected. Strip the end of the wires. The Bridge Rectifiers should be completely removed now.



8. Connect VIOLET and BLACK wires to CN3. Connect ORANGE and BLACK wires to CN4. Reference the wire mapping diagram.

9. Check the position of the DC output cables before turning on the pinball machine. BLACK cables should be located in the middle between CN4 and CN3.



10. Turn on Pinball Machine. RED LEDs should illuminate on board. Test game.

